



PTSC OFFSHORE SERVICES

"PTSC 01" 5000 Ton Flat Top Barge

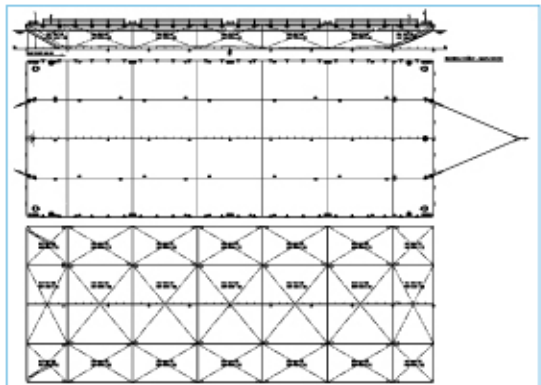


Principal dimension:

Length, overall	L_{OA}	=	90,00	m
Length	L	=	89,80	m
Breadth, moulded	B	=	34,60	m
Depth, moulded	D	=	5,50	m
Draught, moulded	d	=	4,00	m
Displacement	W	=	11585	t
Dead weight	DW	=	9515	t
Gross tonnage	GT	=	4424	t
Net tonnage	NT	=	1327	t

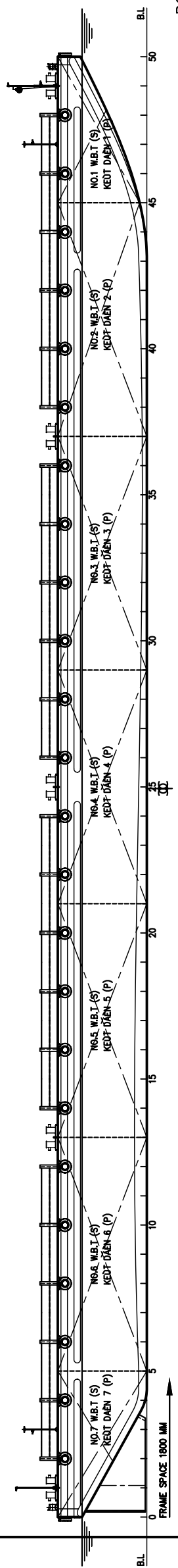
Capacities:

Load carrying capacity 5000T
The main deck is designed to carry
uniformed load 12T/m²

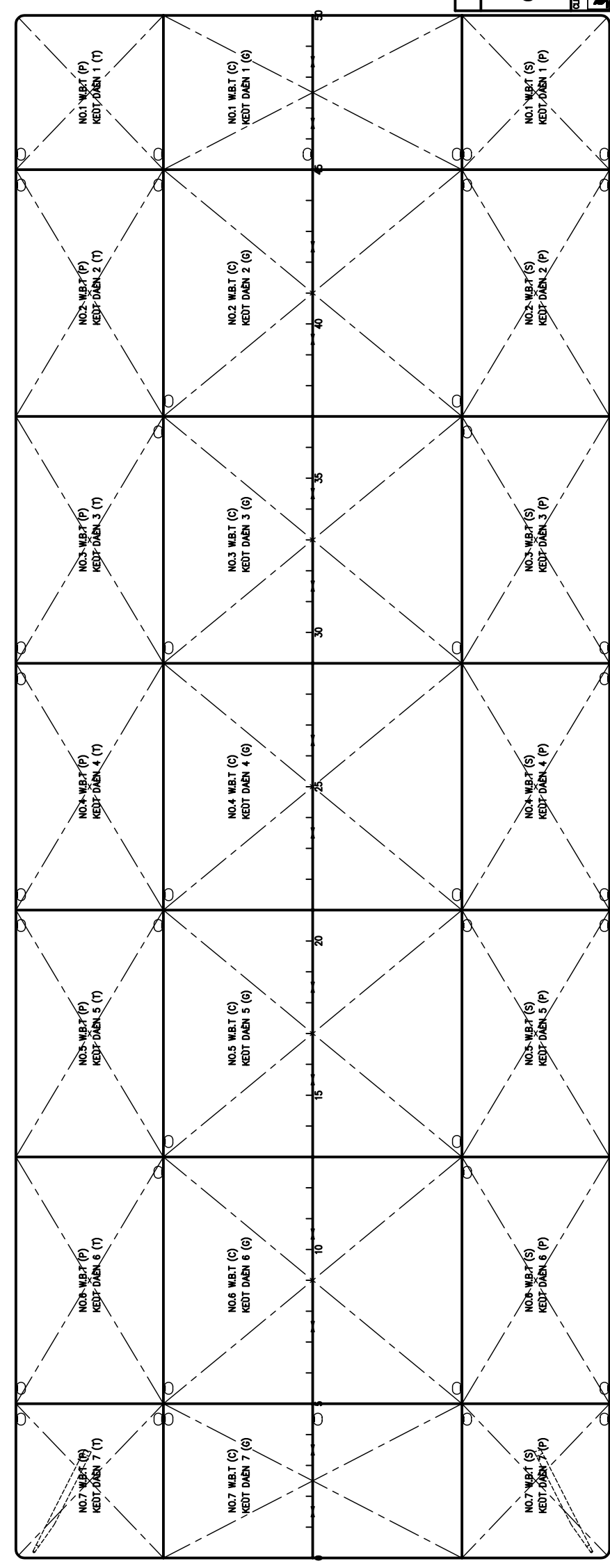
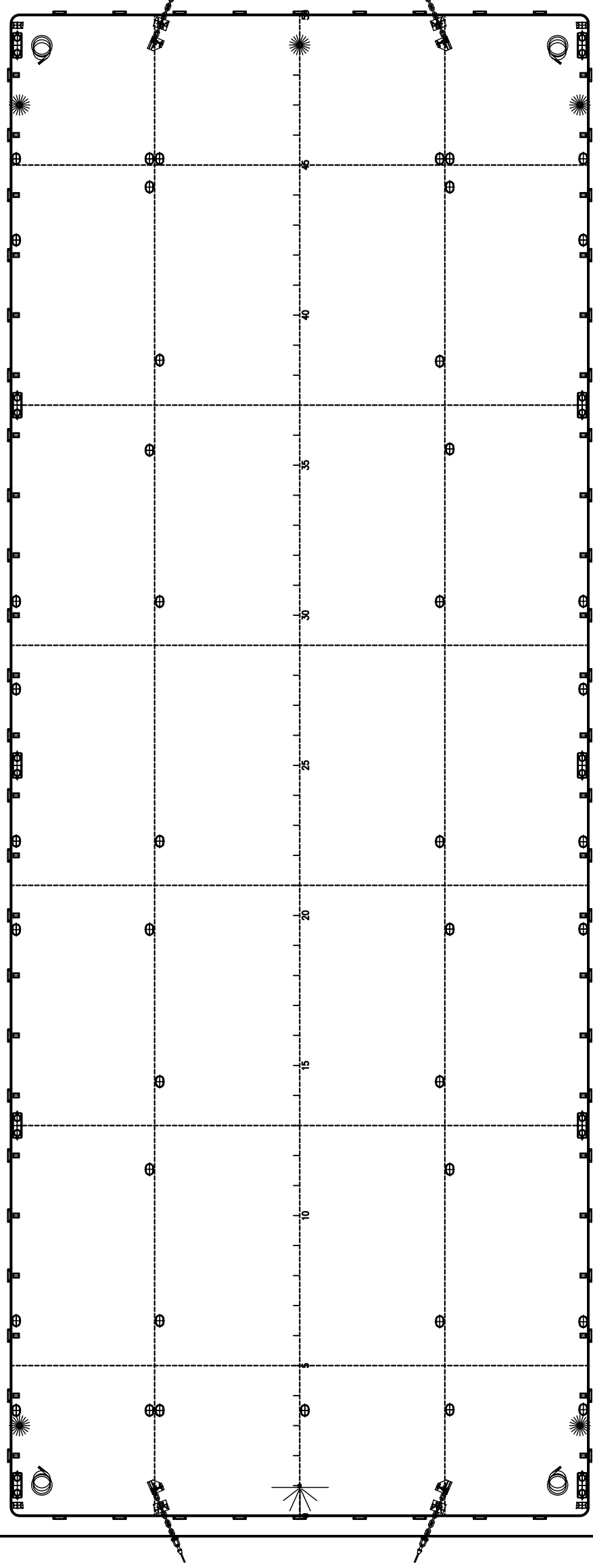


PTSC OFFSHORE SERVICES Co., LTD

Suite 606, 6th floor PetroVietnam Towers
8 Hoang Dieu St., Yang Tau City
Tel: +84 64 351 57 58 - Fax: +84 64 351 57 59
Email: sales.psc@ptsc.com.vn - Website: www.ptsc.com.vn



BOONG CHÍNH - MAIN DECK



DƯỚI BOONG CHÍNH - UNDER DECK

THÔNG SỐ CƠ BẢN - PRINCIPAL PARTICULAR

CHEAU DAI TOANH BOX	LENGTH (O.A)	90.00 M
CHEAU DAI	LENGTH	89.50 M
CHEAU ROANG	BREADTH (M.LD)	34.50 M
CHEAU CAO MAN	DEPTH (M.LD)	5.50 M
CHEAU CHU	DRAFT (M.LD) DESIGNED	4.00 M
LUONG CHEAM N000C	DISPLACEMENT	11965 T
TRONG TAI	DEADWEIGHT	8515 T
CO QUAN PHANH CAP TABU	CLASSIFICATION	BY/IR
VUNG HOAT ROANG	BEAN KHONG HAIN CHEA	
NAVIGATION AREA	OCEAN GOING	

AS-BUILT	
PREPARED	DATE
CHECKED	DATE
APPROVED (CONTRACTOR)	DATE
APPROVED (CLIENT)	DATE
TECH.	
SHEET: 1 OF 2	
REVISION: 104	
CLIENT: SALAN MAT BOONGKET DAN DECK CARGO/TANK BARGE	
ENGINEERING CONSULTANT: WMSM GROUP SOUTHERN ENGINEERING AND SHIPBUILDING COMPANY	
CONTRACTOR: SESCO S133	
DESIGNER: PETROLIUM TECHNICAL SERVICES CORPORATION MECHANICAL AND CONSTRUCTION	

BỐ TRÍ CHUNG GENERAL ARRANGEMENT